



Joe Doud Administration Building
545 Academy Drive
Northbrook, IL 60062
847-291-2960
nbparks.org

Parks and Properties Committee Meeting

May 16, 2022

6:30pm

Joe Doud Administration Building, 545 Academy Drive

AGENDA

- I. Call to Order—Chair Chalem; Members Curin and Goodman
- II. Recognition of Visitors
- III. Approval of Meeting Minutes
5/16.24 Parks and Properties Committee Meeting of April 20, 2022
- IV. Informational Items / Verbal Updates
A. ComEd Energy Efficiency Grants
- V. Unfinished Business
- VI. New Business
5/16.25 Consider Landscape Maintenance Services, Bid #2226
5/16.26 Consider Countryside Park Playground Equipment Options
- VII. Old Business
- VIII. Next Meeting – June 14, 2022, at 6:30pm, Joe Doud Administration Building, 545 Academy Drive
- IX. Adjournment

Copies to: Park Board, Attorney, Directors, All Staff and Park District Facilities, Daily Herald, Village of Northbrook,
Posted on Park District Website: nbparks.org

Persons with disabilities requiring reasonable accommodation to participate in this meeting should contact Eileen Loftus, the Park District's ADA Compliance Officer, at the Park District's Administration Building by mail at 545 Academy Drive, Northbrook, Illinois 60062, by phone at (847) 291-2960, Monday through Friday 8:30am until 5:00pm, or by email to eloftus@nbparks.org at least 48 hours prior to the meeting. Requests for a qualified ASL interpreter generally require at least 5 business days' advance notice. For the deaf or hearing impaired, please use the Illinois Relay Center voice only operator at (800) 526-0857.



Joe Doud Administration Building
545 Academy Drive
Northbrook, IL 60062
847-291-2960
nbparks.org

MEMORANDUM

To: Parks and Properties Committee
From: Chris Leiner, Director of Parks & Properties
Agenda Item: VI. 5/16.25 Consider Contract Landscape Maintenance Services, Bid #2226
Date: May 13, 2022

Staff Recommendation:

Staff recommends approval of the Base Bid, Fall Clean-up Alternate, and the worker hourly rate for Contract Landscape Maintenance Services, Bid #2226 in the amount of \$191,895 from Milieu Design of Lake Zurich, Illinois.

Background & Analysis:

This contract includes spring clean-up, select maintenance, and fall clean-up at the following sites: Joe Doud Administration Building, the Leisure Center, Meadowhill Aquatic Center, Northbrook Sports Center, Techny Prairie Center, Techny Prairie Activity Center, Techny Prairie Parks and Fields, Village Green Park, West Park, Wood Oaks Green Park and Coast Guard Park.

As discussed on April 15, 2022 at the Parks and Properties Committee Meeting, staff recommended repurposing the projected \$267,000 in surplus wages resulting from the Grounds Department seasonal staffing shortage to contractual services to perform the work. As a reminder, in April the Board approved the allocation of \$32,019 of the wage surplus to expand contractual mowing.

The contract includes an hourly rate for on-demand, as-needed, non-prevailing wage landscape services. Staff is seeking authorization to fund an additional 3,550 landscape maintenance hours as needed throughout the season at the legal bid rate of \$45.00 an hour, totaling \$159,750. For reference, the Grounds Department is budgeted to staff 19,400 seasonal labor hours over the season. The contracted hours would be used for one-time tasks such as grooming parks prior to special events, responding to resident landscape maintenance requests, and maintaining landscape beds outside of the major parks outlined in the base scope.

The District received three bids for this contract.

Bidder	Base Bid Total	Fall Clean Up Total	Total	Landscape Maintenance Worker Hourly Rate
Milieu Design, LLC 525 Enterprise Parkway Lake Zurich, IL 60047	\$29,130.00	\$3,015.00	\$32,145.00	\$45.00
Brightview Landscapes 3490 Long Grove Road Long Grove, IL 60047	\$38,792.00	\$2,812.00	\$41,604.00	\$41.00
Moore Landscapes, LLC 1869 Techny Road Northbrook, IL 60062	\$78,784.00	\$8,886.00	\$87,670.00	\$52.00

NORTHBROOK PARK DISTRICT

The lowest qualified bidder, Milieu Design, LLC, is currently providing mowing services at various locations throughout the District. Staff has had a positive experience with this contractor.

Explanation:

1. Budgeted Cost: NA
2. Budget Source: 2022 Operating Budget- 10-20-82-620-1102-5050

Motion:

The Parks and Properties Committee Chair moves to approve the Base Bid, Fall Clean-up Alternate, and 3,550 labor hours at the legal bid rate of \$45.00 an hour for Landscape Maintenance Services, Bid #2226 from Milieu Design, LLC of Lake Zurich, Illinois, in the amount of \$191,895 to the full Board for approval.

Pc: Molly Hamer, Executive Director



Joe Doud Administration Building
545 Academy Drive
Northbrook, IL 60062
847-291-2960
nbparks.org

MEMORANDUM

To: Parks and Properties Committee
From: Chris Leiner, Director of Parks and Properties
Agenda Item: VI. 5/16.26 Consider Countryside Park Playground Equipment Options
Date: May 13, 2022

Staff Recommendation:

Staff recommends the approval of two Countryside Park Playground Equipment options provided by Play Illinois LLC/Burke, to be made available to the public for voting.

Background & Analysis:

Planning for this project began in early 2022, with anticipated construction in 2023.

In early April, a mailer was sent out to residents within a quarter-mile radius of Countryside Park to find out current demographics, what amenities are used most, what color palettes are preferred for the new play equipment, what amenities residents would like to see added, and an opportunity to leave comments. The mailer was sent to 312 resident homes, 61 responses were received (20% response rate). The results of the survey showed that the play equipment used most includes swings, slides and climbers. The sand area was said to be used by 13 out of 52 respondents, but when asked what park amenity was used most, the sand area received 0% of the votes. In addition, three comments specifically asked if the sand could be removed. Based on these results, it is the opinion of the Planning Department to remove the sand area from the design. The playground palette with the most votes was earth tones. Within the scope of the project, the highest recurring requests were for more benches (six comments) and more picnic tables (five comments), which will be addressed with the playground replacement.

After survey results were compiled, an RFP was sent out to three playground suppliers to create two concept designs for Countryside Park. Each vendor was asked to create two designs with two separate structures for the 2-5 and 5-12 age groups. From those submissions the planning department selected the two concepts provided by Play Illinois/Burke to present to the board. Both concepts will have presentation boards at the meeting. For more detailed information please see the attached narrative, renderings and featured play elements provided by the vendor.

Option 1: Play Illinois LLC/Burke – Nature Play Tower
Option 2: Play Illinois LLC/Burke – River Rock Adventure

Explanation:

Budgeted Cost for Play Equipment (only): \$100,000
Budget Source: 2023 CIP
Legal Requirement: None

Motion:

The Parks and Properties Committee Chair moves to approve the two Countryside Playground Play Equipment design concepts provided by Play Illinois LLC/Burke, to be made available to the public for voting.

Pc: Molly Hamer, Executive Director



Playground Narratives

Option 1: Burke/Play Illinois LLC – Nature Play Tower

2–5 year-old structure: The ramped 2-5 structure has a fast, curvy **Monoco Slide** which will keep kids moving and having fun while developing core strength and balance. The **Apex Hole Climber** promotes active play using creative and unique entry points allowing children to engage in continuous movement while developing strength, balance, and coordination. The nature-inspired **Tree Branch Climber** boasts organic shapes and lots of climbing fun. **The Accessible Bee and Car Panels** encourage exploration, interaction and development of fine-motor skills for children with all abilities. **The Rain Crescent Panel** incorporates musical exploration into your playground. The **Pinball Panel** enhances cognitive development and fine motor skills while adding visual interest.

5–12 year-old structure: **Nucleus Core Climber** is the beginning of a play experience that will keep children moving, discovering, and surprising themselves at every turn. The Nucleus Core lays the foundation for exploration with multiple climbing paths and challenge levels. The **Arch Climber** consists of climbing ropes to view the world from a different angle while taking children outside the post and deck structure. While climbing, users will experience three slides. The **168" Curved Cobra Slide** has a variety of developmental benefits ranging from core strength to balance. The **Velo XL Slide** was designed to be the fastest and most exciting sliding experience for kids! With nearly a 50-degree angle, it is steep, fun and gives kids a feeling of freedom as they fly down the slide! **The Crescent Drum Panel** is a great addition to the play space to encourage creativity and socialization.

Free standing components: With five free standing components kids have tremendous variety off the structures. The **Daisy Spinner** creates play and development opportunities for children ages 2-5. It will improve children's strength, coordination and balance while developing kinesthetic awareness. The **Comet and Swift Twist Spinners** challenge children to utilize their strength, balance, and coordination. The fast **Comet Spinner** can be used by a single child or by a group of children for maximum play ability. On the **Bunny Rocker** children will let their imaginations soar while developing balance, coordination, cooperation, and core strength. The **Orb Rocker** is a whole new take on rocking! With four traditional seats and room for four more in the center, its unique design and exciting rocking motion invites everyone into the fun. Caregivers and children will love the ease of access with side openings that allow users of all sizes to enter and ride comfortably. Providing opportunities for teamwork and collaboration, the Orb Rocker helps children develop skills that transcend the playground.

Option 2: Burke/Play Illinois LLC – River Rock Adventure

2–5 year-old structure: This is a contemporary, inclusive design with a multitude of climbing and sliding components. Users encounter the first climber at the entry to the structure. The **Rock it End Panel** creates the thrill, excitement and challenge of rock climbing in a realistic, yet safe, playground environment. Users can experience the **Pinball/Piston Panel**, an interactive and fun panel which enhances cognitive development and fine motor skills, while adding visual interest to the play space. Moving on to the **Mesa Climber** which offers an adventurous, fun, and exciting way for children to move through the playground! With loads of color and a textured step design, the Mesa Climber adds visual

and tactile interest to the play space. The **Monaco and Double Luge Slides** provide a variety of sliding opportunities. The **Petal Step Climber** is one of the most popular events on the playground. It's fun, exciting, and adventurous. It's also extremely beneficial to child development and builds upper and lower body strength, agility, cognitive planning and cooperation skills.

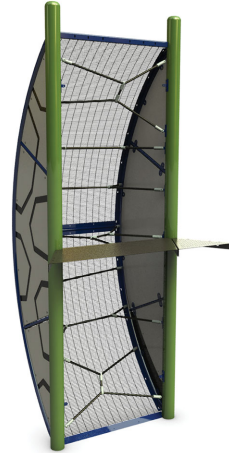
5–12 year-old structure: The **Sensory Rail** brings a sensory-rich play experience to the playground. Sensory play is critical to child development and enriches language, develops motor skills, promotes socialization, and encourages creative problem solving. The **Extreme Twist Spiral Slide** is designed with a minimal footprint so there's more room for more play. Don't be fooled by the small footprint though, it's huge on fun and development. Sliding is an incredible way to enhance balance and coordination while developing turn taking and cooperation skills. The **96" Velo XL Slide** was designed to be the fastest and most exciting sliding experience for kids! With nearly a 50-degree angle, it is steep, fun and gives kids a feeling of freedom as they fly down the slide. **Play Ensemble Babel Drum** is a unique instrument that looks and plays like a drum but sounds like a bell or chime. The **Hide the Numbers Game** offers cognitive development and cooperative play. It is great way to encourage intergenerational play and help children learn numbers, addition, and strategy, and this panel will bring educational fun to your play space. The **Fierce Cyclone Spinner** challenges children to utilize their strength and coordination. It helps with the development of kinesthetic awareness as well as focus on proper posture. **Burke's S Horizontal Ladder** is a twist (pun intended) on the classic overhead climber. It promotes upper body strength and will teach resilience, and build agility, upper and lower body strength and problem-solving skills while having fun.

FEATURED PLAY EVENTS



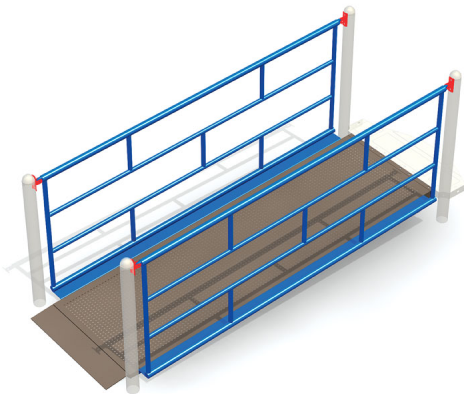
COBRA SLIDE® CURVED

Excitement can't be contained when it comes to COBRA SLIDES! They are twisting, turning, in and out of light and SO MUCH FUN! Fun aside, sliding has a variety of developmental benefits ranging from core strength and balance to taking turns and imagination.



Nucleus® Evolution® Arch Climber

Climbing up ropes to view the world from a different angle. Inspiring new panoramas, creating new vistas. You're protected but it looks open and new. A perspective like nothing you've ever experienced before.



ADAAG Ramp

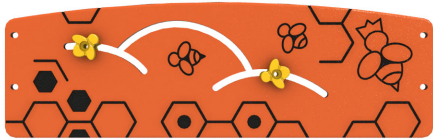
Ramps and stairs build lower body strength and improve kids' coordination.



Pinball Panel

Interactive and fun, the Pinball Panel enhances cognitive development and fine motor skills while adding visual interest to your playspace, outdoor classroom or anywhere you need more play.

FEATURED PLAY EVENTS



BEE ACCESSIBLE REACH PANEL

Interactive play events provide opportunities for social interaction while increasing coordination and adding additional sensory stimulation to the playground.



EVOLUTION HEX ROOF

Intricate climbers. Fast slides. The Next Evolution in Play is here. The Nucleus Evolution collection will move children to experience adventure, develop narratives and create experiences like no one has seen on the playground before.



3.5" Arch Swing

Swings help children develop coordination and balance while providing an engaging sensory experience.



Bunny Rocker

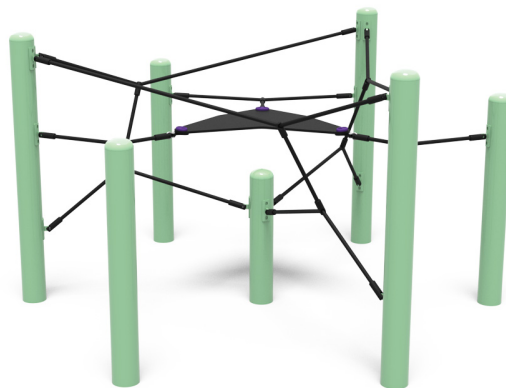
Colorful, distinctive characters come to life on the newest Burke Rockers! Children will let their imaginations soar while developing balance, coordination, cooperation and core strength.

FEATURED PLAY EVENTS



Velo XL Slide

Rapid and swift, the Velo Slide is designed to be the fastest, most exciting sliding experience for kids!



Nucleus Core Climber

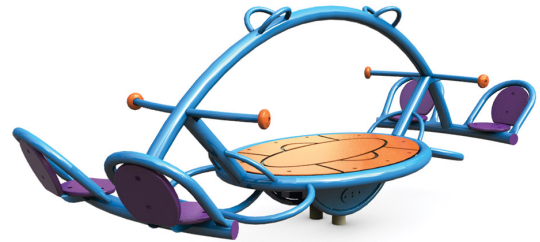
Nucleus Core is the beginning of an incredible play experience that will keep children moving, discovering and surprising themselves at every turn. Core lays the foundation for exploration with multiple climbing paths and challenge levels that link children to slides, towers, climbers and more.

FEATURED PLAY EVENTS



Konnection™ Swing

The Konnection Swing promotes intergenerational play, engagement and interaction when adults and children swing together. Children can also enjoy swinging together while advancing skills such as cooperation and teamwork.



ORB™ ROCKER

With four traditional seats and room for four more in the center, the Orb Rocker's unique design and exciting rocking motion invites everyone into the fun. Caregivers and children will love the ease of access with side openings for users of all sizes.



COMET II

It challenges children to utilize their strength, balance and coordination. It can be used by a single child or by a group of children for maximum play ability. Children can sit or stand on the outside or inside of the comet.

FEATURED PLAY EVENTS



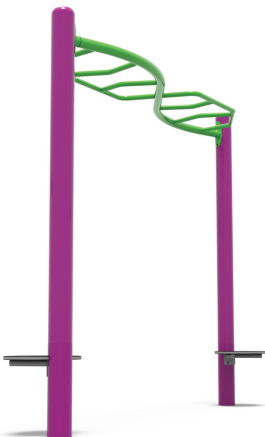
Extreme Twist Spiral Slide

The Extreme Twist is designed with a minimal footprint so there's more room for more play. Don't be fooled by the small footprint though, it's huge on fun and development. Sliding is an incredible way to enhance balance and coordination while developing turn taking and cooperation skills.



Apex Wave Climber

Build agility, upper and lower body strength and problem solving skills while having fun on this exciting climber!



S Horizontal Ladder

Overhead Ladders offer so many opportunities for play and development within a playspace. These new overheads embody Burke's energetic design language, are loads of fun and promote upper body strength and teach resilience!



Sensory Rail

The Sensory Rail brings a sensory-rich play experience to playground railings. Sensory play is critical to child development and enriches language, develops motor skills, promotes socialization and encourages creative problem solving.

FEATURED PLAY EVENTS



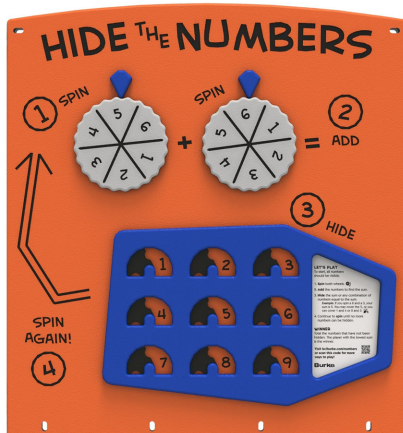
PlayEnsemble Babel Drum

The Babel Drum is a unique instrument that looks and plays like a drum but sounds like a bell or chime. The Babel offers design versatility and a small footprint that can be placed with another PlayEnsemble instruments or on any post in a Nucleus playspace.



Pinball/Piston Panel

Interactive and fun, our new Pinball/Piston Panel enhances cognitive development and fine motor skills while adding visual interest to your playspace, outdoor classroom or anywhere you need more play.



Hide the Numbers Game

Cognitive development and cooperative play shine with the Hide the Numbers Game! A great way to encourage intergenerational play and help children learn numbers, addition and strategy, this panel will bring educational fun to any playspace!



Fierce Cyclone

It challenges children ages 5-12 to utilize their strength and coordination. It helps with the development of kinesthetic awareness as well as focus on proper posture.

FEATURED PLAY EVENTS



Luge™ Slide

With the Luge Slide, kids can race each other down while developing social skills and increasing coordination.



Mesa Climber

With loads of color options and a textured HDPE design, the Mesa Climber adds visual and tactile interest to the playspace. Designed with a variety of climbing abilities in mind, this climber is a great add to any play environment.



Konnection™ Swing

The Konnection Swing promotes intergenerational play, engagement and interaction when adults and children swing together. Children can also enjoy swinging together while advancing skills such as cooperation and teamwork.

FEATURED PLAY EVENTS



Velo XL Slide

Rapid and swift, the Velo Slide is designed to be the fastest, most exciting sliding experience for kids!



MANITOU™ CLIMBER

The Manitou Climber features hand and foot holds arranged so that children of differing climbing abilities can climb at their own pace and be challenged to move to the next level.



Freedom Swing Seat

The Freedom inclusive Swing Seat allows children of all abilities to enjoy the childhood joy of swinging in a safe and secure seat.